



Trip summary

DAY ONE	Hyatt Regency, Addis Ababa (1 night, bed and breakfast)	Arrive Addis Ababa on your international flights (please note international flights are your responsibility to book). VIP meet and greet on arrival. Transferred by road to the Hyatt Regency. Depending on your arrival time, you may be able to visit the National and Ethnographic museums, the Cathedral churches, and explore the local markets.
DAY TWO	Wild Expeditions Webb Tented Camp, Bale	Private charter Addis Ababa to Robe (approx. 1.5hrs) Wild Expeditions Webb Tented Camp, Bale (3 nights, full board) Arrive at camp for lunch and quick afternoon walk around the camp. The Webb River, which continues its journey through the grassland, is stocked with both rainbow and brown trout. It is an ideal opportunity to have a picnic on the banks of the river and try a hand at fly fishing.
DAY THREE	Bale Mountains National Park	Early breakfast and prepare for your first day exploration of the National Park. These days are all about the Ethiopian wolf. In the park, the wolves patrol their territory in the early morning whilst the sun warms up the environment. Guests will explore by vehicle, pony or foot looking for them as they start their day's activities.
DAY FOUR	Bale Mountains National Park	Explore the park further. The Gaysay Grassland has some of Ethiopia's highest concentrations of mammals. Included in the grassland are Mountain Nyala, Reedbuck, Warthog, Serval, Olive Baboons, Golden Jackals, Columbus Monkeys, Bushbuck, Grey Duiker and Hyena. Guests will have access to ponies and they will be in camp to use as well.

<p>DAY FIVE</p>	<p>Lale's Camp, Omo Valley</p>	<p>Leave Camp after early an early breakfast. Transfer back to Bale Robe Airstrip. Private flight From Bale to Murulle. Depart Murulle by boat to Lale's Camp(40mins) Lale's camp is a beautiful tented camp with en suite tents situated on the banks of the Omo River under a grove of mahogany and fig trees.</p>
<p>DAY SIX</p>	<p>Mursi Fly Camp, Omo Valley</p>	<p>Early morning light breakfast followed by a drive to the remote Hamar village. Here, guests witness and document the early morning routine of this Omotic community. The Hamar are renowned for their bull-jumping ceremony, and guests are welcome to attend if happening when you visit. Guests then head back to camp for breakfast before taking a boat trip (3hrs) up river to Mago National Park to camp with Mursi villagers. The Mursi walk down to the river from their villages in the distant hills. They will trade for coffee and millet. You will spent a day/night/ here getting know this remote tribe.</p>
<p>DAY SEVEN</p>	<p>Lale's Camp, Omo Valley</p>	<p>A morning wildlife walk in Mago National Park. Boat back to Lale's Camp for lunch Drive to for a short visit to the Nyangatom Villages . Back to camp and witness the incredible Kara body painting and Dancing cermonies.</p>
<p>DAY EIGHT</p>	<p>Depart / Back to Addis</p>	<p>Depart camp after breakfast by boat back to Murulle for a private flight to Addis. Arrive at Addis and transfer to hotel. Last shopping in the city and farewell dinner and jazz at Fendika. Morning transfer to airport in time for your international flight.</p>

Your itinerary cost

Cost for accommodation including flights:

Per person for 2 people US\$ 18,345 (net cost)

Per person for 4 people US\$ 18,345 (net cost)

Per person for 6 people US\$ 8,975 (net cost)

Per person for 8 people US\$ 7,687.50 (net cost)

Per person for 10 people US\$ 7,161 (net cost)

Cost for one private guide or host is included in the above cost

info@wildexpeditions.co



Hyatt Regency

Hyatt Regency is centrally positioned near the airport on Meskel Square. The hotel building centres around a courtyard with landscaped gardens, and water features.

The hotel offers a vibrant dining destination where guests can enjoy a range of international flavours and local cuisine. The spacious hotel lobby and its extended lounge area offers an integrated business centre, a gift shop, flowers and a coffee area that serves freshly brewed world-famous Ethiopian coffee, delicious pastries and bakery items.


The guest rooms are welcoming with comfortable beds, large working areas with ergonomic chairs and charging stations. Bathrooms feature a walk-in rain shower and a fine selection of bathroom amenities.

During your time in Addis Ababa you will have the opportunity to explore the city. Highlights include the Trinity Cathedral, Church of Raguel, local markets and galleries and various community projects. Addis also has a fantastic Jazz scene that is well worth discovering.

The National Museum is also a must-see and is ranked among the most important in sub-Saharan Africa. Far and away the highlight is the paleontological exhibition in the basement, the home of world-famous Lucy. Her 1974 discovery in the Afar region of north western Ethiopia changed our understanding of human origins forever.





 Fendika, Jazz night, Addis Ababa



📍 Tej house, Addis Ababa



 National Museum, Addis Ababa

An aerial photograph of a tented camp in a vast, green valley. The camp consists of four large, rectangular tents with olive-green canvas walls and light-colored roofs. The tents are arranged in a loose cluster on a grassy slope dotted with rocks. In the background, a winding river flows through a deep, rocky gorge. The landscape is lush and green, with rolling hills and mountains visible in the distance under a clear sky.

Wild Expeditions Webb Tented Camp



 Wild Expeditions Webb Tented Camp



 Wild Expeditions Webb Tented Camp



 Wild Expeditions Webb Tented Camp



Bale Mountains

The Bale Mountains – home to one of the highest incidences of endemic species, not only in Africa, but throughout the world – is located in south-eastern Ethiopia, some 400 kilometres from the capital Addis Ababa. Its protected areas, as constituted by Bale Mountains National Park, are some 2,200 square kilometres large.

The Bale Mountains makes for an extraordinary habitat. Divided into grasslands, woodlands, Afro-alpine meadowlands, the Erica moorlands and Haremma forest, it is home variously to great welts of juniper tree, wildflower (hagenia, for example) shrubs, and to the iconic Sanetti Plateau; an enormous area of lichen covered rock, periodically punctuated by streams, lakes, and giant lobelia.

Given the climate, the Bale Mountains are home to 20 animals endemic to Ethiopia, of which 5 mammals are found only here – they include the Bale monkey and the giant mole-rat. Crucially, it is home to over half the remaining population of the Ethiopian wolf. Other species of mammal include the mountain nyala, the Menelik's bushbuck, spotted hyena, lion, leopard and African wild dog – all in extremely low numbers. Overall, there is a high incident of rodent species, several of which are keystone features of the food chain – which accounts not only for the presence of the Ethiopian wolf, but also for the area's large numbers of raptor. Indeed bird-wise, the area is extremely rich, with over 280 species thus far identified.

Ancestral home of the Oromo, the Bale Mountains are home to approximately a population of 1.5 million, most of which are farmers, and for whom the mountains are an important aspect of the traditional annual grazing cycle – meaning that tensions between the local community's needs and those of a fragile wildlife habitat periodically occur, and require sensitive handling.



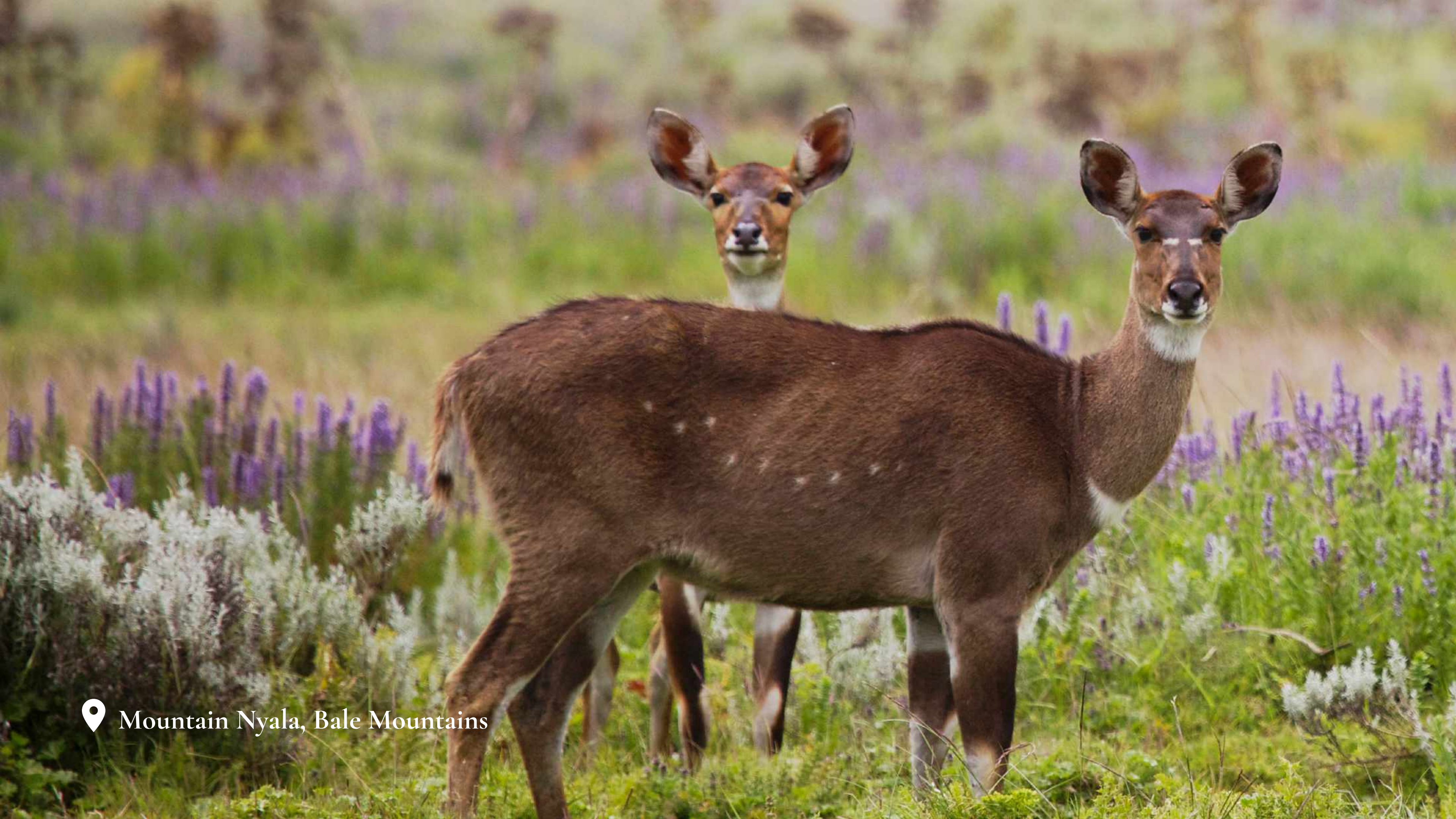
 Bale Mountains



 Ethiopian Wolf, Bale Mountains



 Bale Mountains



 Mountain Nyala, Bale Mountains

A wide, calm river flows through a valley. On the left bank, there is a dense line of green trees and bushes. In the distance, a range of brown, rocky mountains stretches across the horizon under a pale, overcast sky. A small boat with a canopy is visible on the river in the lower-left quadrant. The water reflects the sky and the surrounding landscape. The text "Lale's Camp, Omo Valley" is overlaid in the center of the image.

Lale's Camp, Omo Valley



 The Kara community, Omo River

Located on a sinuous bend of the lower Omo River in southern Ethiopia, Lale's Camp is set in deep riverine shade on the edge of the river, tamarind trees providing shelter from the baking sun. The nearby Kara village of Dus (one of just three villages belonging to the Kara people) is only a few minutes' walk away, with some isolated Hamar settlements further afield.

The camp is extremely remote, and access is possible only by river after first driving or flying to the southern Omo using the little known Murule Airstrip (less than 2 hours flight from Addis Ababa in a private charter). This remoteness is key to enabling exclusive access to authentic tribal cultures of the lower Omo such as the Kara, Hamar, Mursi and Nyangatom.

A comfortable dining and lounge tent, or mess, is the central point of Lale's Camp. Meals are taken here or outdoors around the fire.

Carefully spaced along the high banks of the Omo River on either side of the main area are seven large, spacious Meru tents. En suite, with flush toilets and traditional safari showers, each tent is carefully positioned in the deepest shade of this special patch of riverine forest. Gauze panels serve as 'windows', maximising the through draft and ensuring our guests are immersed in nature and can hear all the sounds of the night.

Rivet Monkeys, Guereza Colobus and Gambian Sun Squirrels are residents in camp with the nearby Kara village of Dus only a few minutes' walk away.



 Lale's Camp, Omo Valley



 Lale's Camp, Omo Valley



 Lale's Camp, Omo Valley



 Lale's Camp, Omo Valley



 Kara, Omo River



 Kara, Omo River



 Kara, Omo River



Experiences

Lale's Camp is centered around the appreciation of the tribal cultures of the lower Omo region and the Omo River itself. Aside from boating and limited use of vehicles, we spend a lot of time on foot, either with the local people or in exploring this vast environment.

customs are a key focus for our guests. Meeting with the Mursi people requires a stay at an overnight fly camp far upriver at a site where the Mursi women collect clay to fashion their lip plates.

A Kara village (one of only three settlements of this tiny ethnic group which consists of less than 1500 people in its entirety) is within walking distance of Lale's Camp, while inland from the river lie small, isolated Hamar settlements. Interactions with these fascinating people and learning about their culture and customs are a key focus for our guests. Meeting with the Mursi people requires a stay at an overnight fly camp far upriver at a site where the Mursi women collect clay to fashion their lip plates.

The Omo River itself is part of the adventure, with boating providing fantastic viewing of some unusual primates (like De Brazza's Monkey) and some special bird species (Egyptian Plover; Pel's Fishing Owl), while marvelling at the large crocodiles sunning themselves on the banks.



Mursi Mountains Fly Camp

The Mursi are a marginal community living in and around the Mursi Mountains, mid valley, between Omo National park, Hanna Wildlife Reserve and Mago National Park. The practice of women using lip plates has made them a point of particular interest.

Located north of Lale's Camp, high up on a riverbank overlooking the Omo River, and another addition to the Wild Expeditions portfolio, Mursi Mountains Fly Camp is an excellent and truly off-the-beaten-track accommodation.

Set and struck at the drop of a hat, an all-canvas affair, and accessed by boat and foot, Mursi Mountains Fly Camp consists of a mess area and sleeping tents. A gazebo-type set up, the shared area includes a dining area and seating. The earth underfoot is soft and the climate warm, even in evenings, so guests can walk around bare foot. Please note there is access to minimal electricity at the camp and no Wi-Fi. Respecting the privacy of the Mursi, photography is limited to arrangements made between host and guide.

Food at Mursi Mountains Fly Camp is a basic affair, often a one-pot wonder, with pasta and sauce or curry and rice as a staple. Self-service is the way of the camp, from drinks in the fridge to the food laid out in buffet style on the table.

Depending on guests' needs, staff at the camp, who are from nearby communities, are happy to either join the table at dinner times or to give guests privacy.



 Mursi Mountains Fly Camp



 Mursi Mountains Fly Camp



📍 Mursi Mountains Fly Camp



 Mursi Tribe





 Lale's Camp



Your itinerary includes:

A seamless ground arrangement service
VIP airport assistance on arrival and departure
Full board accommodation (Bed and Breakfast in Addis Ababa)
Your own private tented camp in Gheralta
All scheduled flights as stipulated
All Park and Conservancy Fees
Membership to the Emergency Flying Doctors

Your itinerary excludes:

International flights and travel insurance
Visas
Additional activities such as spa treatments
Alcoholic drinks, wines, spirits (we can make a plan to make sure the right drinks are in the right place)
All items of a personal nature and staff gratuities
Any new government taxes or levies that are beyond our control

info@wildexpeditions.co



Wild Expeditions

SPECIALIST ETHIOPIAN JOURNEYS